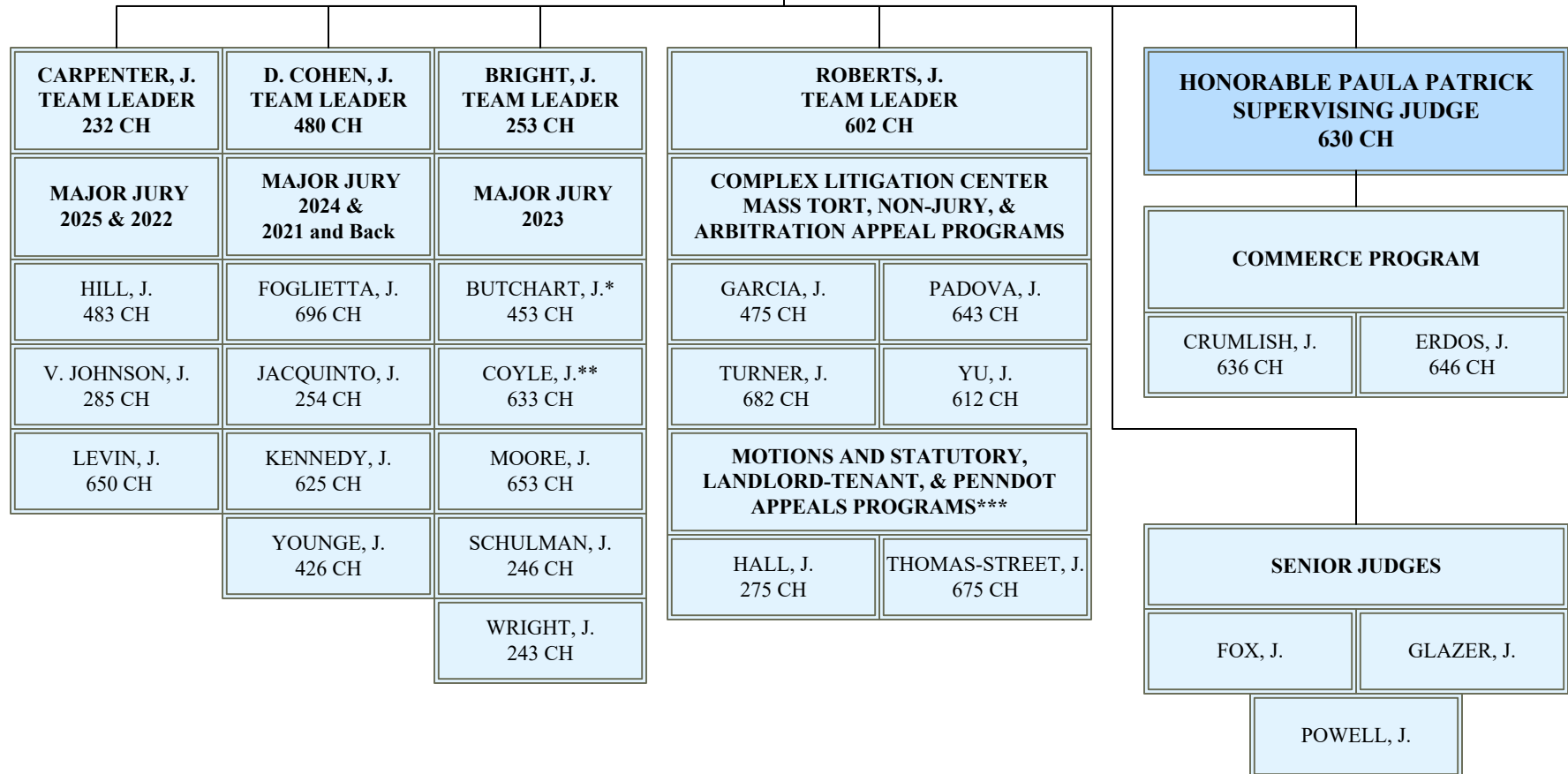




**FIRST JUDICIAL DISTRICT OF PENNSYLVANIA
COURT OF COMMON PLEAS OF PHILADELPHIA
TRIAL DIVISION – CIVIL JUDICIAL ASSIGNMENT CHART
Effective: May 1, 2025**

**STEVEN J. WULKO
DEPUTY COURT
ADMINISTRATOR**

**HONORABLE DANIEL J. ANDERS
ADMINISTRATIVE JUDGE
513 CH**



*Act 135 petition actions are assigned to Judge Butchart.

**Actions filed in the City of Phila. Code Enforcement Program are assigned to Judge Coyle.

***Actions filed in the PennDOT Appeals and Landlord-Tenant Appeals Programs are assigned to judges of the Municipal Court certified and approved pursuant to PA.R.J.A. 701(C)(2) to preside in Common Pleas Court (446 CH).

Effective: 5-1-25

Rev.: 4-15-25